

U5O22:342PM

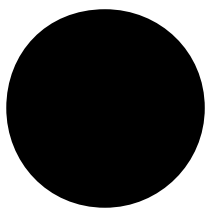
3 Oczk owo tcvkpiu

Vcdng 4 Oczk owo tcvkpi (T_c = 25°C unless otherwise specified)

U{ o dqn	Rctc o gygt	Xcnwg	Wpkv	Vguv Eqp fkvkqpu	Pqvg
V					

U5O22:342PM

022:



h

Figure 7: Transfer characteristic for various junction temperatures

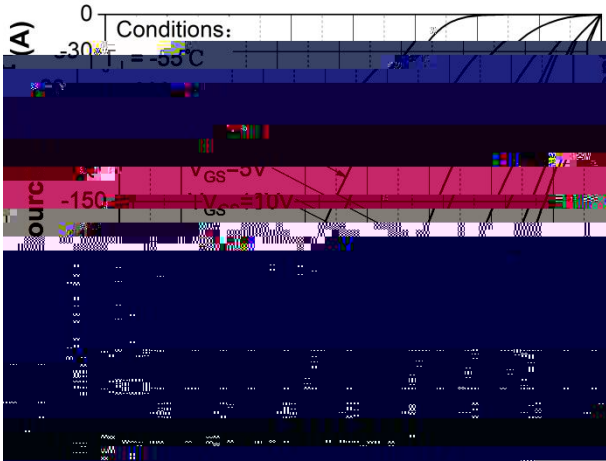


Figure 13. 3rd quadrant characteristic at $T_j = -55\text{ }^\circ\text{C}$

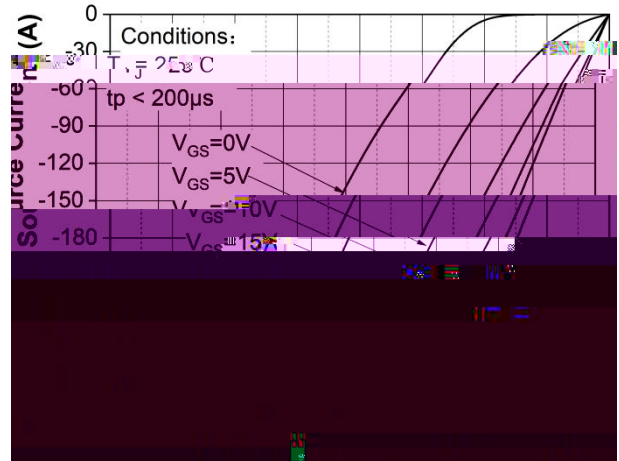


Figure 14. 3rd quadrant characteristic at $T_j = 25\text{ }^\circ\text{C}$

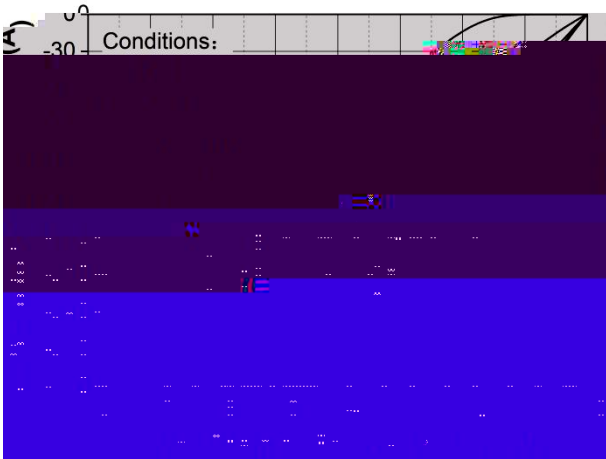


Figure 15. 3rd quadrant characteristic at $T_j = 175\text{ }^\circ\text{C}$

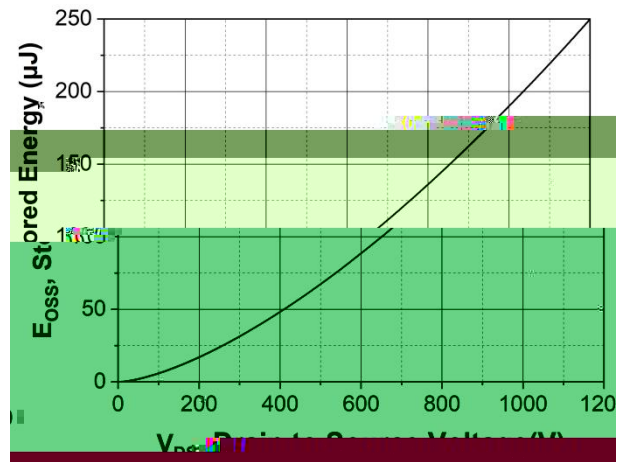


Figure 16. Output capacitor stored energy

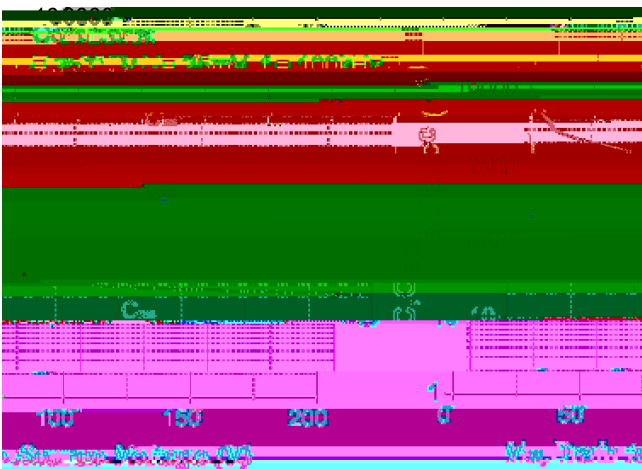


Figure 17. Capacitances vs. drain-source voltage (0 - 200V)

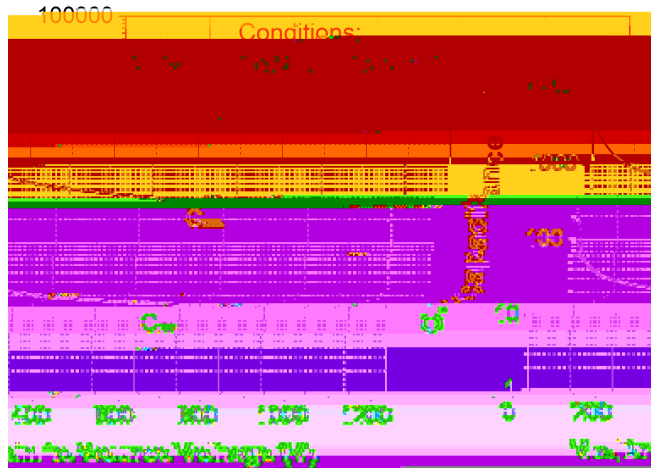


Figure 18. Capacitances vs. drain-source voltage (0 - 1200V)

U5O22:342PM

7 Vguv eqpfkvkqpu

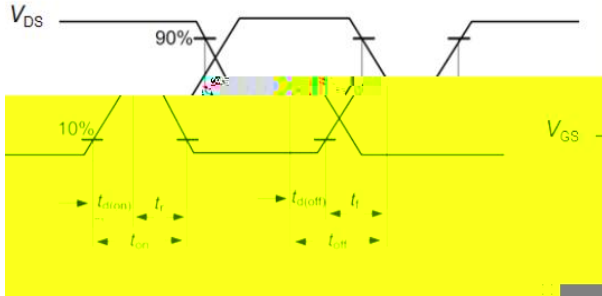


Figure A. Definition of switching times

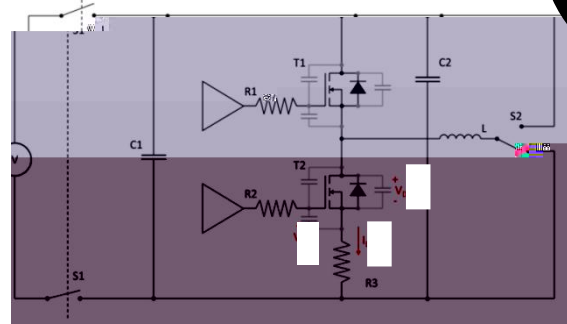


Figure B. Dynamic test circuit

Tgxlk n jk

Fqew o gpv xgtukqp	Fcvq qh tngcug	Fqew o gpv uvcig	Fguetkrvkqp qh ejcpigu
X23a22	4247/2:/47	---	Kpkvken tngcug
X23a23	4247/32/45	---	---
X23a24	4247/34/53	Hkpcn	---

Cvvgpvkqp

1. TqJU eq o rnkpeg

The levels of RoHS restricted materials in this product are below the maximum concentration value (also referred to as the threshold limits) permitted for such substances, or are used in an exempted application, in accordance with Directive 2002/95/EC (RoHS2), as implemented January 2, 2013.

2. REACH SVHC eq o rnkpeg

REACH SVHC information is available for this product. European Chemical Agency (ECHA) has published noti*n

6. Due to technical requirements products may contain dangerous substances. For information on the types in question please contact Sichain office.

7. Except as otherwise explicitly approved by Sichain in a written document signed by authorized representatives of Sichain, Sichain' products may not be used in any applications where a failure of the product or any consequences of the use thereof can reasonably be expected to result in personal injury.

8. For use of our products in applications requiring a high degree of reliability (as exemplified below), please contact and consult with a Sichain representatives, for example but not limited to: transportation equipment,primary communication equipment,traffic lights,fire/crime prevention, safety equipment, medical systems, and power transmission systems.