

SG2M021120B



TriQSiC™ 1200V Silicon Carbide Power MOSFET G2

Features

-
-
-
-
-
-

SG2M021120B

SG2M021120B



SG2M021120B

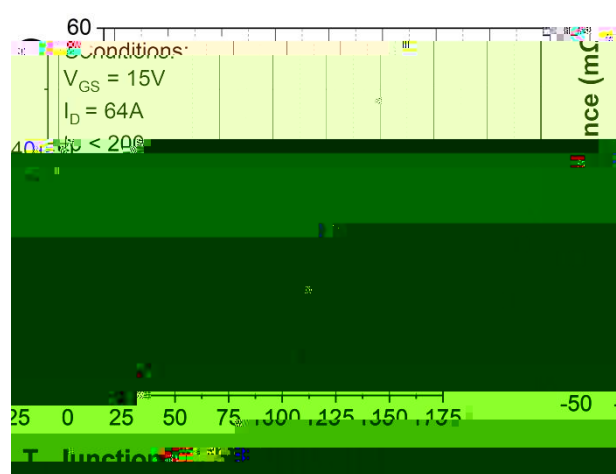
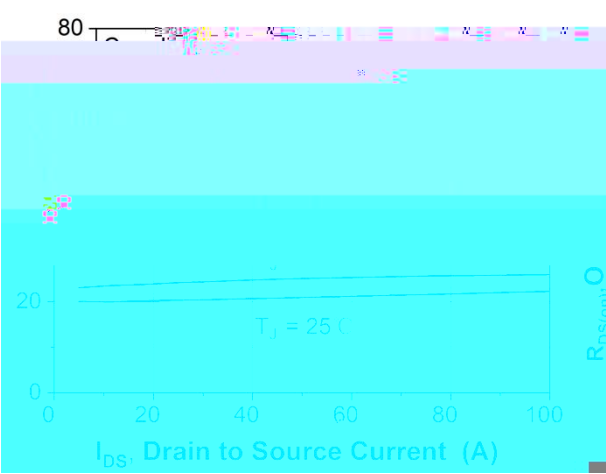
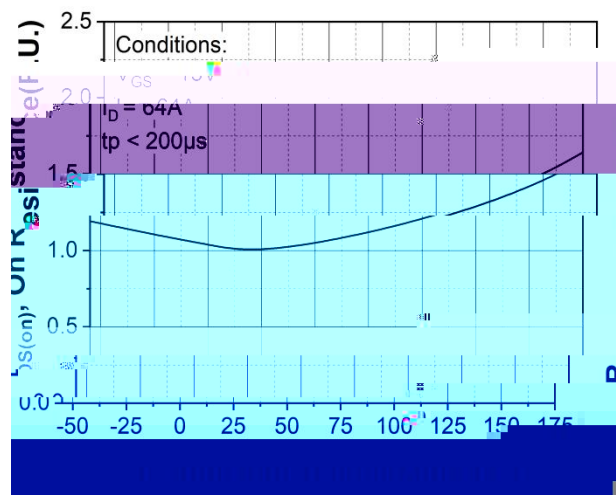
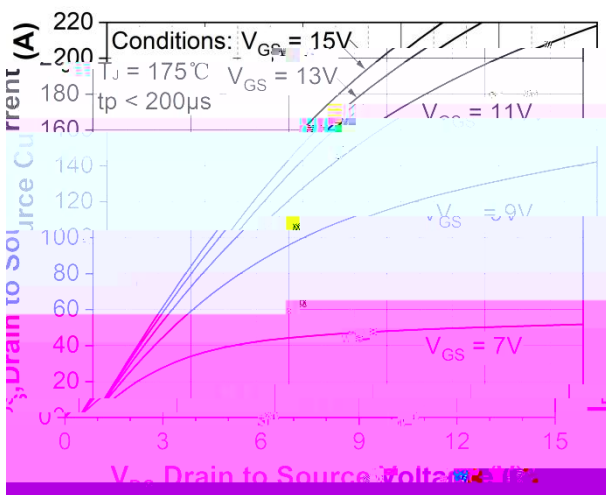
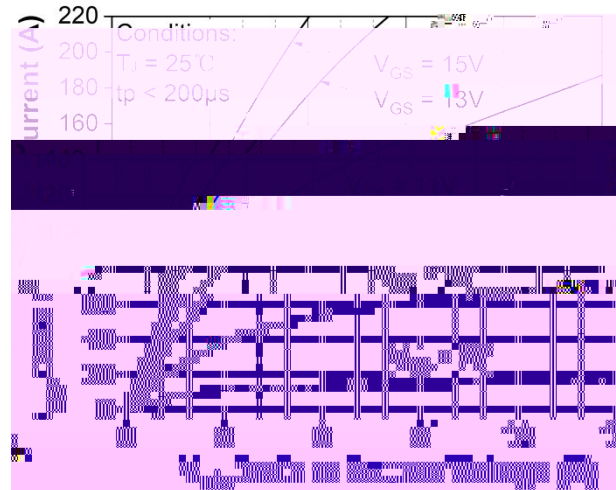
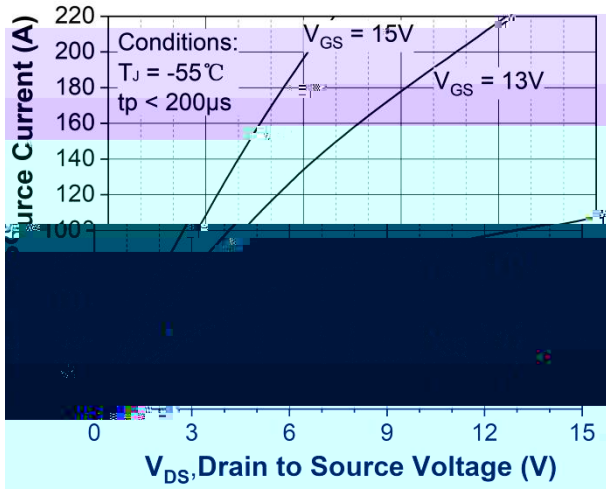


1200V SiC Power MOSFET

3.3 Switching characteristics

Table 6 Dynamic characteristics

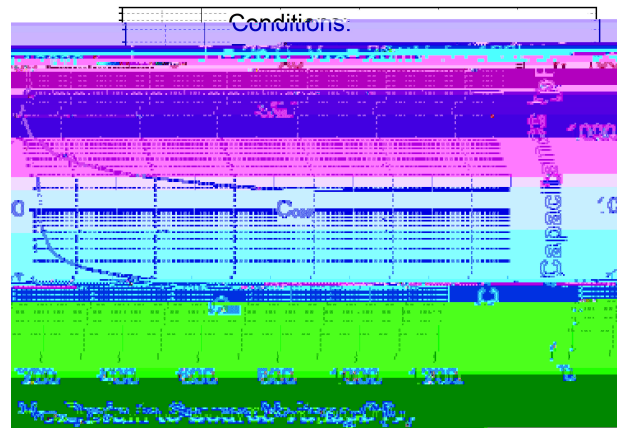
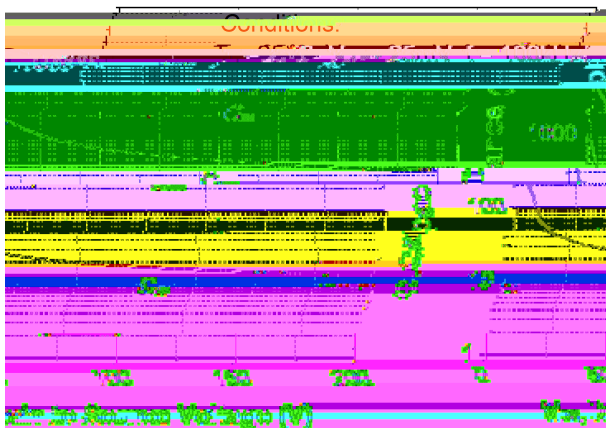
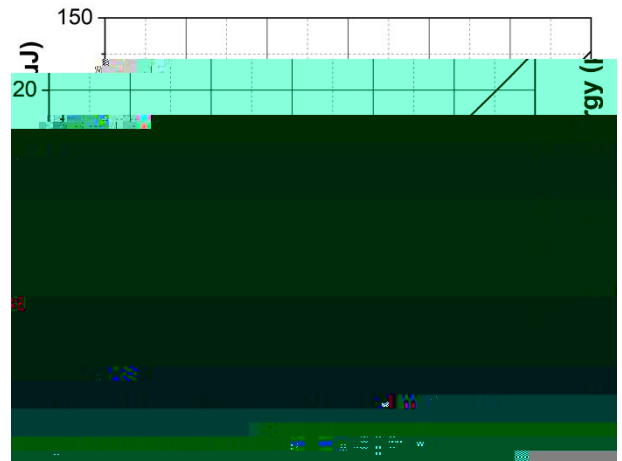
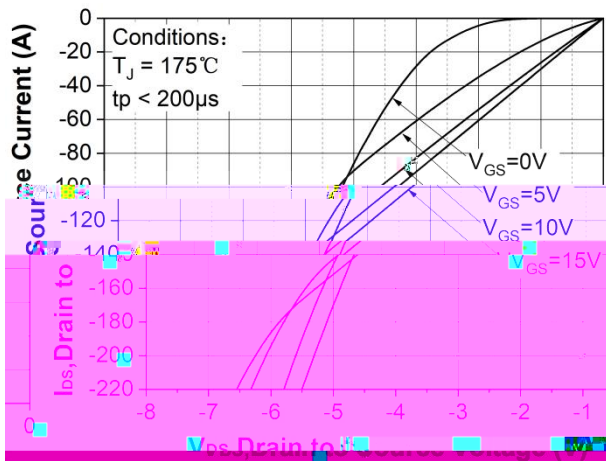
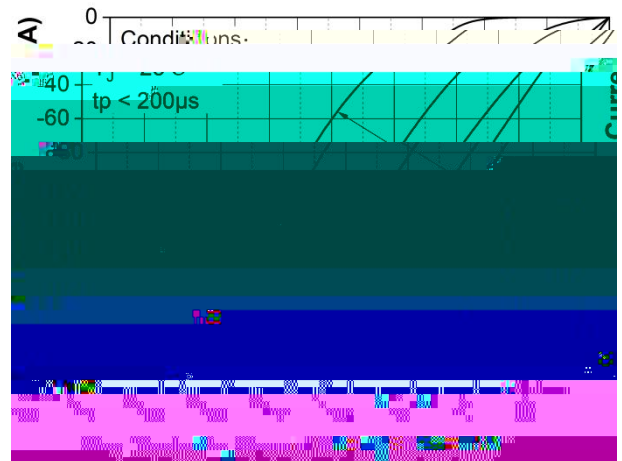
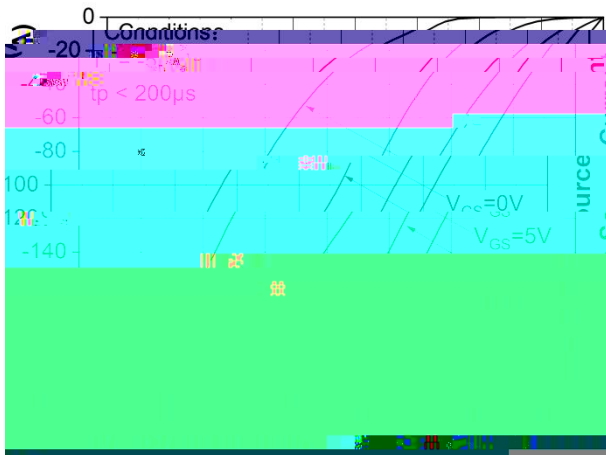
4 Electrical characteristic diagrams



SG2M021120B



SG2M021120B



4 Mechanical parameters

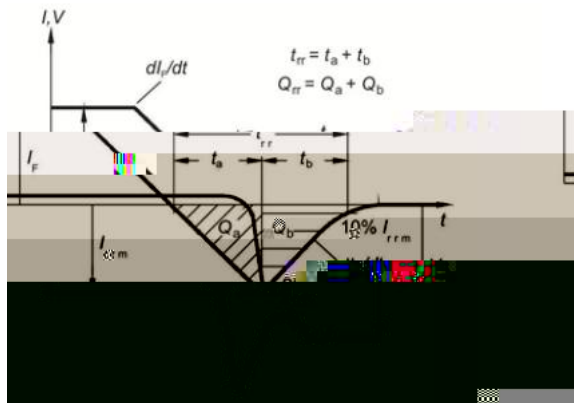
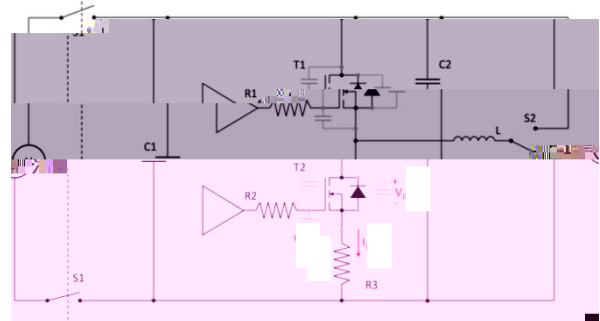
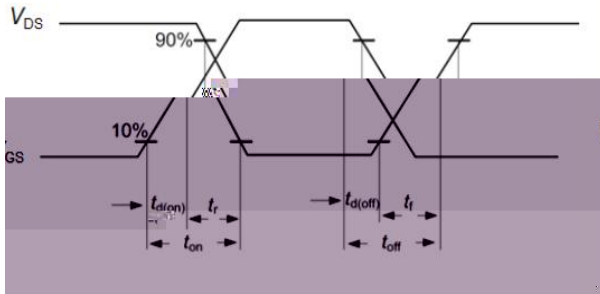
4.1 Dimensions and metallization

Parameter	Typical value	Unit	Metallization
-----------	---------------	------	---------------

SG2M021120B

1200V SiC Power MOSFET

5 Test conditions



SG2M021120B



1200V SiC Power MOSFET

Revision history

Document version	Date of release	Document stage	Description of changes
V01_00	2025-08-08		
V01_01	2025-12-25	Final	

Attention

RoHS compliance

М А
⊗

REACH compliance

5 Y

R Y

SG2M021120B

