

S1P40R120SSE-A (Preliminary)

S1P40R120SSE-A (Preliminary)



1200V SiC Power MOSFET Module

Table of contents

Table of contents

Features	1
Applications	1
Table of contents.....	2
1 Maximum ratings	3
2 Thermal / Packaging Characteristics	4
3 Electrical characteristics.....	5
3.1 Static characteristics	5
3.2 Dynamic characteristics	5
3.3 Switching characteristics.....	6
4 Package drawing.....	7
5 Test conditions	8
Revision history	9
Attention.....	9

S1P40R120SSE-A (Preliminary)



1200V SiC Power MOSFET Module

1 Maximum ratings

Table 2 Maximum rating ($T_c = 25^\circ\text{C}$ unless other

S1P40R120SSE-A (Preliminary)



1200V SiC Power MOSFET Module

2 Thermal / Packaging Characteristics

S1P40R120SSE-A (Preliminary)

1200V SiC Power MOSFET Module



S1P40R120SSE-A (Preliminary)



1200V SiC Power MOSFET Module

* By estimated

3.3 Switching characteristics

Table 6 Dynamic characteristics($T_c = 25^\circ\text{C}$ unless otherwise specified)

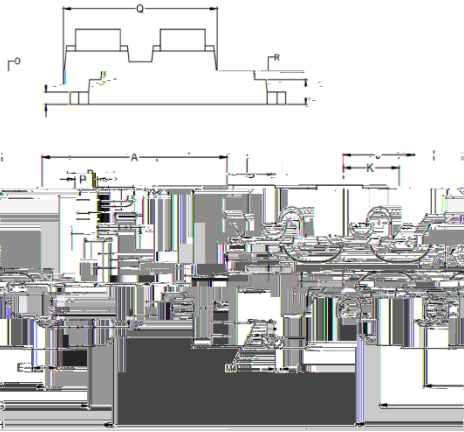
Symbol	Parameter	Min.	Typ.	Max.	Unit	Test Conditions	Note
E_{on}	Turn on switching energy	-	259	-		$V_{DS} = 800\text{V}$, $V_{GS} = -4/+15\text{V}$ $I_D = 33.3\text{A}$, $R_g = 2.5$, $L = 120$ H	
E_{off}	Turn off switching energy	-	50	-			
$t_{d\ on}$	Turn on delay time	-	31	-			
t_r	Rise time	-	18	-			
$t_{d\ off}$	Turn off delay time	-	32	-	ns		

S1P40R120SSE-A (Preliminary)



1200V SiC Power MOSFET Module

4 Package drawing



DiM	Min	Millimeter	Max	A
10	31.40	31.60		
20	4.40			4.
30	4.40			4.
40	4.40			4.
50	4.40			4.
60	4.40			4.
70	4.40			4.
80	4.40			4.
90	4.40			4.
100	4.40			4.
110	4.40			4.
120	4.40			4.
130	4.40			4.
140	4.40			4.
150	4.40			4.
160	4.40			4.
170	4.40			4.
180	4.40			4.
190	4.40			4.
200	4.40			4.

S1P40R120SSE-A (Preliminary)



1200V SiC Power MOSFET Module

Revision history

Document version	Date of release	Description of changes
V01_00	202.93 673.66 30	

S1P40R120SSE-A (Preliminary)



7. Except as otherwise explicitly approved by Sichain in a written document signed by authorized representatives of Sichain, Sichain' products may not be used in any applications where a failure of the product or any consequences of the use thereof can reasonably be expected to result in personal injury.

8. For use of our products in applications requiring a high degree of reliability (as exemplified below), please contact and consult with a Sichain representatives, for example but not limited to: transportation equipment, primary communication equipment, traffic lights, fire/crime prevention, safety equipment, medical systems, and power transmission systems.